

Welcome

Office 365 – File, Data & Task Management and Migration Strategies

What do you hope to learn today?

Please take a moment to fill out the yellow cards.

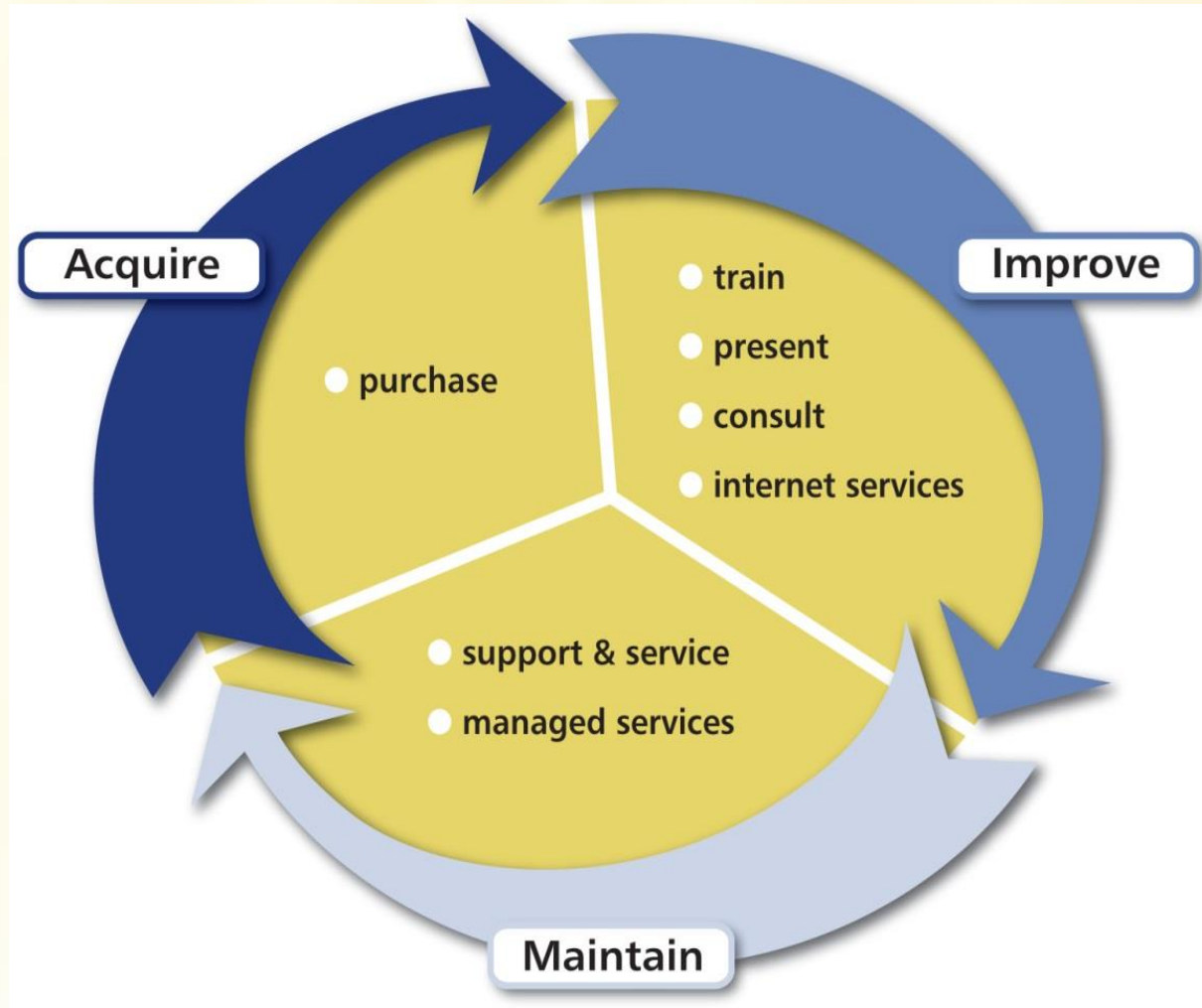
Our presenters will review the cards to ensure that we cover the topics/areas of interest.

We will collect them before we get started.

Thanks!



the one source for IT & AV



System Source & Mind Over Machines:

- **Leaders in Baltimore IT since 1980s**
 - System Source since 1981
 - Mind over Machines since 1989
- **Long-tenured, complementary relationship**



the one source for IT & AV



And they all wish they had come to Mind Over Machines first.

Since 1989, the business systems we've built, fixed, restored and upgraded have turned around failing businesses, saved millions, opened new markets, powered growth, and catapulted companies from obscurity to industry dominance.

APPLICATION DEVELOPMENT | CRM | BI/DATA | SHAREPOINT | IT ASSESSMENTS | HEALTHCARE IT

Welcome
Office 365 – File, Data & Task
Management and Migration Strategies

What do you hope to learn today?

Please take a moment to fill out the yellow cards.

Our presenters will review the cards to ensure that we
cover the topics/areas of interest.

We will collect them before we get started.

Thanks!



the one source for IT & AV

'Learn Today' Cards

What do you hope to learn today?

Please take a moment to fill out the yellow cards.

**Our presenters will review the cards to ensure that we
cover the topics/areas of interest.**

We will collect them before we get started.

Thanks!

system|source

35
years

the one source for IT & AV

Agenda

- What is Office 365
- Office 365 Plans
- Identity and service management
- Email migration options

What is Office 365?



the one source for IT & AV

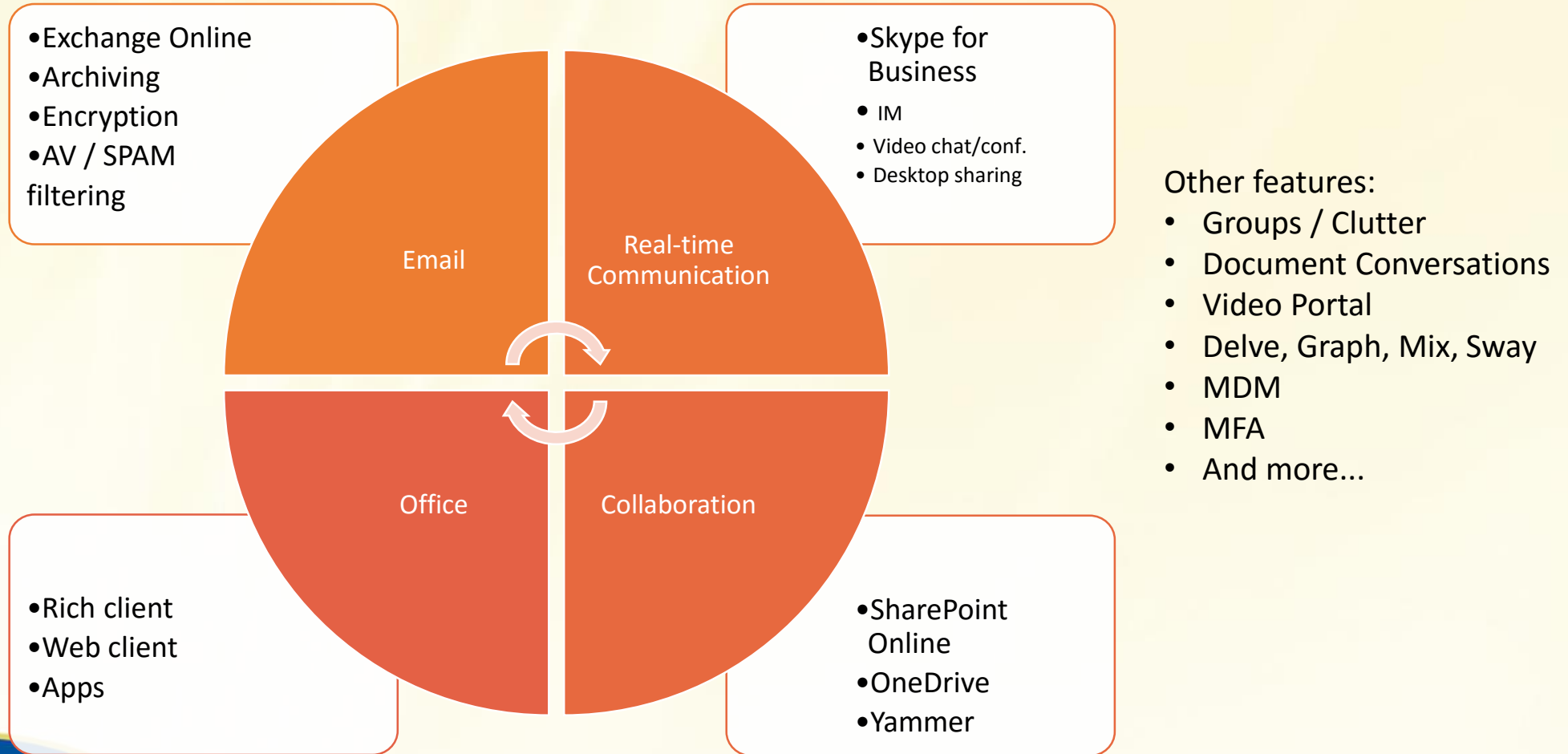
What is Office 365?



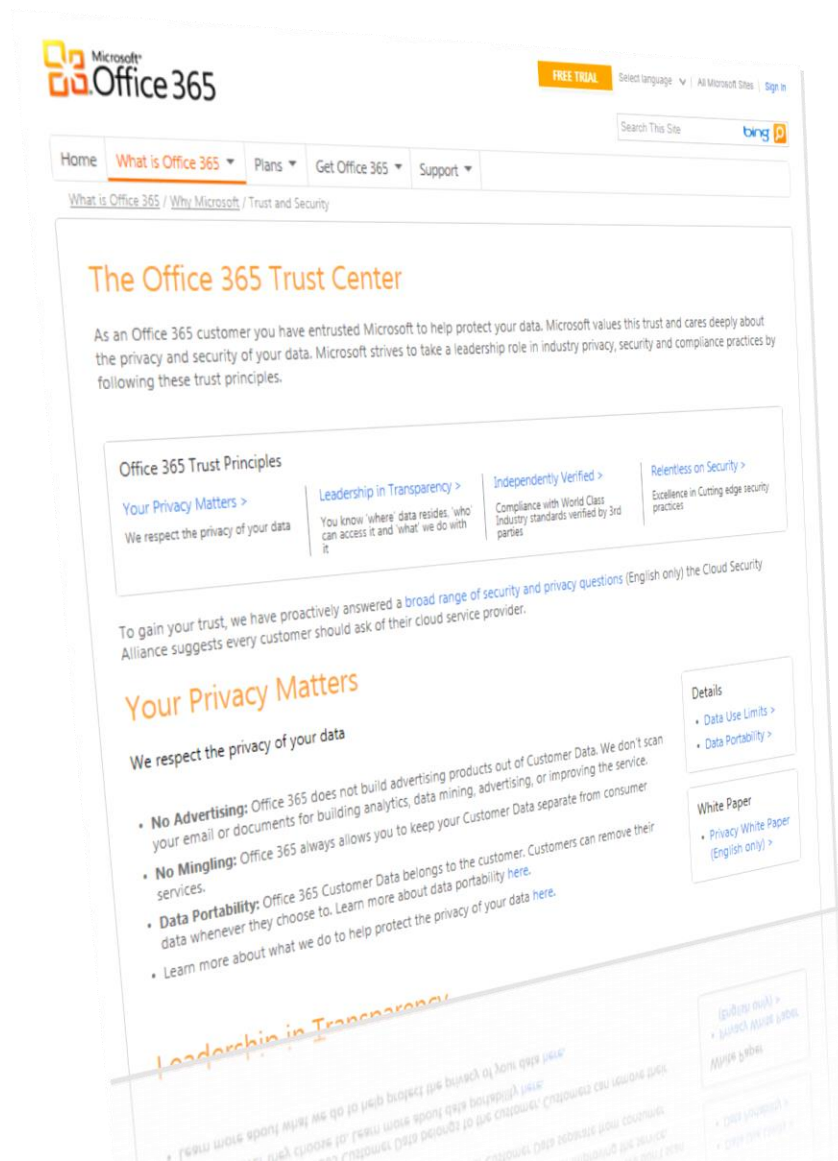
What is Office 365?

- Office 365 is a SaaS solution and is one of several cloud solutions offered by Microsoft.
- Your connectivity to, and your use of, Office 365 and other Microsoft cloud services are flexible.
 - Subscribe to one service only or a suite of services (organization wide or per user)
 - Subscription plans offer various levels of features
 - Separate or integrate on-premises and cloud identities
 - Integrate cloud services with on-premises services (Hybrid)

What is Office 365?



Office 365 Trust Center



Clear messaging with plain English

Details for security experts

Links videos, whitepapers

<http://trust.office365.com>

Office 365 Plans



the one source for IT & AV

Enterprise

| | Office 365 ProPlus | Office 365 Enterprise E1 | Office 365 Enterprise E3 | Office 365 Enterprise E5 |
|------------------------------------------------------------------------------------------------------------------------------------------------------------------------------------------------------------------------------------------------------------|----------------------------------------------|---------------------------------------------|----------------------------------------------|----------------------------------------------|
| | \$12.00 user/month (annual commitment) | \$8.00 user/month (annual commitment) | \$20.00 user/month (annual commitment) | \$35.00 user/month (annual commitment) |
| User maximum | Unlimited | Unlimited | Unlimited | Unlimited |
| Fully installed Office applications Word, Excel, PowerPoint, Outlook, Publisher, and OneNote on up to 5 PCs or Macs per user ⓘ Now includes the new Office 2016 apps for your PC and Mac. Now includes the new Office 2016 apps for your PC and Mac. | ✓ | | ✓ | ✓ |
| Office on tablets and phones for the fully installed Office experience on up to 5 tablets and 5 phones per user ⓘ | ✓ | | ✓ | ✓ |
| Online versions of Office including Word, Excel and PowerPoint | ✓ | ✓ | ✓ | ✓ |
| File storage and sharing with 1 TB storage per user | ✓ | ✓ | ✓ | ✓ |
| Business class email, calendar, and contacts with a 50 GB inbox per user ⓘ | | ✓ | Unlimited inbox | Unlimited inbox |



the one source for IT & AV

Enterprise

| | Office 365 ProPlus | Office 365 Enterprise E1 | Office 365 Enterprise E3 | Office 365 Enterprise E5 |
|-------------------------------------------------------------------------------------------------|----------------------------------------------|---------------------------------------------|----------------------------------------------|----------------------------------------------|
| | \$12.00 user/month (annual commitment) | \$8.00 user/month (annual commitment) | \$20.00 user/month (annual commitment) | \$35.00 user/month (annual commitment) |
| Unlimited online meetings, IM, and audio, HD video, and web conferencing. | | ✓ | ✓ | ✓ |
| Intranet site for your teams with customizable security settings | | ✓ | ✓ | ✓ |
| Corporate social network to help employees collaborate across departments and locations | | ✓ | ✓ | ✓ |
| Work management tools to help teams create plans, organize, assign and collaborate around tasks | | ✓ | ✓ | ✓ |
| Professional digital storytelling tools to create interactive reports, presentations, and more | ✓ | ✓ | ✓ | ✓ |
| Personalized search and discovery across Office 365 using the Office Graph | | ✓ | ✓ | ✓ |



the one source for IT & AV

Enterprise

| | Office 365 ProPlus | Office 365 Enterprise E1 | Office 365 Enterprise E3 | Office 365 Enterprise E5 |
|-------------------------------------------------------------------------------------------------------------------------------------------------------------------|----------------------------------------------|---------------------------------------------|----------------------------------------------|----------------------------------------------|
| | \$12.00 user/month (annual commitment) | \$8.00 user/month (annual commitment) | \$20.00 user/month (annual commitment) | \$35.00 user/month (annual commitment) |
| Corporate video portal for uploading and sharing your corporate videos across the company | | ✓ | ✓ | ✓ |
| Meeting broadcast on the Internet to up to 10,000 people, who can attend in a browser on nearly any device | | ✓ | ✓ | ✓ |
| Enterprise management of apps with Group Policy, Telemetry, Shared Computer Activation | ✓ | | ✓ | ✓ |
| Self-service Business Intelligence to discover, analyze, and visualize data in Excel | ✓ | | ✓ | ✓ |
| Compliance solutions to support Archiving, Auditing and eDiscovery, mailbox and internal site search and legal hold capabilities depending upon subscription type | | ✓ | ✓ | ✓ |

Enterprise

| | Office 365 ProPlus | Office 365 Enterprise E1 | Office 365 Enterprise E3 | Office 365 Enterprise E5 |
|----------------------------------------------------------------------------------------------------------------------------------------------------------------------------------------------------------------------------|----------------------------------------------|---------------------------------------------|----------------------------------------------|----------------------------------------------|
| | \$12.00 user/month (annual commitment) | \$8.00 user/month (annual commitment) | \$20.00 user/month (annual commitment) | \$35.00 user/month (annual commitment) |
| Information Protection including Rights Management and Data Loss Prevention for emails | ✓ | | ✓ | ✓ |
| Advanced eDiscovery with Predictive Coding and Text Analytics | | | | ✓ |
| Advanced Threat Protection helps defend your data against malware and viruses and safeguard your messaging system. Advanced Security Management provides enhanced visibility and control into your Office 365 environment. | | | | ✓ |
| Analytics tools for personal and organizational insights with Power BI Pro and Microsoft MyAnalytics | | | | ✓ |
| PSTN conferencing to allow invitees to join Skype for Business meetings by dialing in from a landline or mobile phone | | | | ✓ |



the one source for IT & AV

Enterprise

| | Office 365 ProPlus | Office 365 Enterprise E1 | Office 365 Enterprise E3 | Office 365 Enterprise E5 |
|-------------------------------------------------------------------------------------------------------------------------------------------------------------------|----------------------------------------------|---------------------------------------------|----------------------------------------------|-------------------------------------------------------------|
| | \$12.00 user/month (annual commitment) | \$8.00 user/month (annual commitment) | \$20.00 user/month (annual commitment) | \$35.00 user/month (annual commitment) |
| Cloud PBX for cloud-based call management to make, receive, and transfer calls across a wide range of devices | | | | ☑ |
| PSTN calling — subscribe to domestic and international calling plans from Office 365 and use existing phone numbers or get new ones. Learn more ↪ | | | | Available for purchase as an add-on for \$24.00 user/month* |

Business

| | Office 365 Business | Office 365 Business Premium | Office 365 Business Essentials |
|----------------------------------------------------------------------------------------------------------------------------------------------------------------------------------------------|------------------------------------------------------------------------|-------------------------------------------------------------------------|------------------------------------------------------------------------|
| | \$8.25 <small>user/month</small> <small>(annual commitment)</small> | \$12.50 <small>user/month</small> <small>(annual commitment)</small> | \$5.00 <small>user/month</small> <small>(annual commitment)</small> |
| Fully installed Office applications Word, Excel, PowerPoint, Outlook, Publisher, and OneNote on up to 5 PCs or Macs per user ⓘ Now includes the new Office 2016 apps for your PC and Mac. | ✓ | ✓ | |
| Office on tablets and phones for the fully installed Office experience on up to 5 tablets and 5 phones per user ⓘ | ✓ | ✓ | |
| Online versions of Office including Word, Excel and PowerPoint | ✓ | ✓ | ✓ |
| File storage and sharing with 1 TB storage per user | ✓ | ✓ | ✓ |
| Business class email, calendar, and contacts with a 50 GB inbox per user ⓘ | | ✓ | ✓ |



the one source for IT & AV

Business

| | Office 365 Business | Office 365 Business Premium | Office 365 Business Essentials |
|-------------------------------------------------------------------------------------------------|------------------------------------------------------------------------|-------------------------------------------------------------------------|------------------------------------------------------------------------|
| | \$8.25 <small>user/month</small> <small>(annual commitment)</small> | \$12.50 <small>user/month</small> <small>(annual commitment)</small> | \$5.00 <small>user/month</small> <small>(annual commitment)</small> |
| Unlimited online meetings, IM, and audio, HD video, and web conferencing ⓘ | | ✓ | ✓ |
| Corporate social network to help employees collaborate across departments and locations | | ✓ | ✓ |
| Work management tools to help teams create plans, organize, assign and collaborate around tasks | | ✓ | ✓ |
| Professional digital storytelling tools to create interactive reports, presentations, and more | ✓ | ✓ | ✓ |
| User maximum | 300 | 300 | 300 |

Non-Profit

| | Office 365 Nonprofit Business Essentials | Office 365 Nonprofit Business Premium | Office 365 Nonprofit E1 | Office 365 Nonprofit E3 | Office 365 Nonprofit E5 |
|----------------------------------------------------------------------------------------------------------------------------------------------------------------------------------------|------------------------------------------|-------------------------------------------------------|-------------------------|-------------------------------------------------------|--------------------------------------------------------|
| | Donation | \$2.00 <small>user/month</small> Free trial | Donation | \$4.50 <small>user/month</small> Free trial | \$10.00 <small>user/month</small> Free trial |
| User maximum | 300 | 300 | Unlimited | Unlimited | Unlimited |
| Fully installed Office applications Word, Excel, PowerPoint, Outlook, Publisher, and OneNote on up to 5 PCs or Macs ⓘ Now includes the new Office 2016 apps for your PC and Mac. | | ✓ | | ✓ plus Access | ✓ plus Access |
| Office on tablets and phones for the full, installed Office experience on up to 5 tablets and 5 phones ⓘ | | ✓ | | ✓ | ✓ |
| Online versions of Office including Word, Excel, and more | ✓ | ✓ | ✓ | ✓ | ✓ |



the one source for IT & AV

Non-Profit

| | Office 365 Nonprofit Business Essentials | Office 365 Nonprofit Business Premium | Office 365 Nonprofit E1 | Office 365 Nonprofit E3 | Office 365 Nonprofit E5 |
|-----------------------------------------------------------------------------------------|------------------------------------------|---------------------------------------------------|-------------------------|---------------------------------------------------|----------------------------------------------------|
| | Donation | \$2.00 _{user/month} Free trial | Donation | \$4.50 _{user/month} Free trial | \$10.00 _{user/month} Free trial |
| File storage and sharing with 1 TB storage/user ⓘ | ✓ | ✓ | ✓ | ✓ | ✓ |
| Business-class email, calendar, and contacts with a 50 GB inbox ⓘ | ✓ | ✓ | ✓ | ✓ | ✓ |
| Unlimited online meetings, IM, and audio, HD video, and web conferencing. | ✓ | ✓ | ✓ | ✓ | ✓ |
| Intranet site for your teams with customizable security settings | ✓ | ✓ | ✓ | ✓ | ✓ |
| Corporate social network to help employees collaborate across departments and locations | ✓ | ✓ | ✓ | ✓ | ✓ |



the one source for IT & AV

Non-Profit

| | Office 365 Nonprofit Business Essentials | Office 365 Nonprofit Business Premium | Office 365 Nonprofit E1 | Office 365 Nonprofit E3 | Office 365 Nonprofit E5 |
|------------------------------------------------------------------------------------------------|------------------------------------------|-------------------------------------------------------|-------------------------|-------------------------------------------------------|--------------------------------------------------------|
| | Donation | \$2.00 <small>user/month</small> Free trial | Donation | \$4.50 <small>user/month</small> Free trial | \$10.00 <small>user/month</small> Free trial |
| Professional digital storytelling tools to create interactive reports, presentations, and more | ✓ | ✓ | ✓ | ✓ | ✓ |
| Personalized search and discovery across Office 365 using the Office Graph | ✓ | ✓ | ✓ | ✓ | ✓ |
| Corporate video portal for uploading and sharing your corporate videos across the company | | | ✓ | ✓ | ✓ |
| Enterprise management of apps with Group Policy, Telemetry, Shared Computer | | | | ✓ | ✓ |
| Self-service Business Intelligence to discover, analyze, and visualize data with Excel | | | | ✓ | ✓ |



the one source for IT & AV

Non-Profit

| | Office 365 Nonprofit Business Essentials | Office 365 Nonprofit Business Premium | Office 365 Nonprofit E1 | Office 365 Nonprofit E3 | Office 365 Nonprofit E5 |
|--------------------------------------------------------------------------------------------------------------------------------------------------------------------|------------------------------------------|-------------------------------------------------------|-------------------------|-------------------------------------------------------|--------------------------------------------------------|
| | Donation | \$2.00 <small>user/month</small> Free trial | Donation | \$4.50 <small>user/month</small> Free trial | \$10.00 <small>user/month</small> Free trial |
| Compliance and information protection including Legal Hold, Rights Management and Data Loss Prevention for email and files | | | | ☑ | ☑ |
| Information Protection including Rights Management and Data Loss Prevention for emails | | | | ☑ | ☑ |
| Advanced eDiscovery with Predictive Coding and Text Analytics | | | | | ☑ |
| Advanced security for your data, that helps protect against unknown malware and viruses and provides better zero-day protection to safeguard your messaging system | | | | | ☑ |



the one source for IT & AV

Non-Profit

| | Office 365 Nonprofit Business Essentials | Office 365 Nonprofit Business Premium | Office 365 Nonprofit E1 | Office 365 Nonprofit E3 | Office 365 Nonprofit E5 |
|-----------------------------------------------------------------------------------------------------------------------|------------------------------------------|-------------------------------------------------------|-------------------------|-------------------------------------------------------|--------------------------------------------------------|
| | Donation | \$2.00 <small>user/month</small> Free trial | Donation | \$4.50 <small>user/month</small> Free trial | \$10.00 <small>user/month</small> Free trial |
| Analytics tools for personal and organizational insights with Power BI and Microsoft MyAnalytics | | | | | ✓ |
| PSTN conferencing to allow invitees to join Skype for Business meetings by dialing in from a landline or mobile phone | | | | | ✓ |
| Cloud PBX for cloud-based call management to make, receive, and transfer calls across a wide range of devices | | | | | ✓ |

Exchange Online

| | Exchange Online Plan 1 | Exchange Online Plan 2 |
|----------------------------------------------------------------------------------------------------------------------------------------------------------------------------------------------------------------------------------------------------------------------|-------------------------------------------------------|-------------------------------------------------------|
| | \$4.00 <small>user/month</small> annual commitment | \$8.00 <small>user/month</small> annual commitment |
| Large mailboxes Each user gets 50 GB of mailbox storage and can send messages up to 25 MB in size. | ✓ | ✓ |
| Outlook support Users can connect supported versions of Outlook to Exchange Online, so they can use the rich client application they already know. | ✓ | ✓ |
| Web-based access For web-client access, Outlook Web App provides a premium browser-based experience that matches the look and feel of the full Outlook client. | ✓ | ✓ |
| Mobility Mobile access is available from all phones that can receive email, including Windows Phone, iPhone®, Android, and Blackberry devices. | ✓ | ✓ |
| Shared calendar and contacts Users can compare calendars to schedule meetings and can access collaboration features, including shared calendars, groups, the global address list, external contacts, tasks, conference rooms, and delegation capabilities. | ✓ | ✓ |
| Apps for Outlook Users can spend less time switching between apps with an extension model that allows third-party web applications easy plug-in access for both Outlook and Outlook Web App. | ✓ | ✓ |

Exchange Online

| | Exchange Online Plan 1 | Exchange Online Plan 2 |
|-----------------------------------------------------------------------------------------------------------------------------------------------------------------------------------------------------------------------------------------------|----------------------------------------|----------------------------------------|
| | \$4.00 user/month annual commitment | \$8.00 user/month annual commitment |
| Security Every mailbox is protected with premier anti-malware and anti-spam protection via Exchange Online Protection. | ✓ | ✓ |
| In-Place Archive Reduce inbox clutter by automatically moving old messages to an In-Place Archive. | ✓ | ✓ |
| In-Place Hold Use In-Place Hold to preserve deleted and edited mailbox items from users' primary mailboxes and In-Place Archives. | | ✓ |
| Unlimited storage Take advantage of unlimited storage (50 GB of storage in the user's primary mailbox, plus unlimited storage in the user's In-Place Archive). | | ✓ |
| Hosted voicemail Take advantage of hosted Unified Messaging services that provide call answering, a dial-in user interface, and company automated attendant capabilities. | | ✓ |
| Data loss prevention (DLP) Control sensitive business data with built-in DLP policies based on regulatory standards such as PII and PCI, which help to identify, monitor, and protect sensitive data through deep content analysis. | | ✓ |

Identity and Service Management



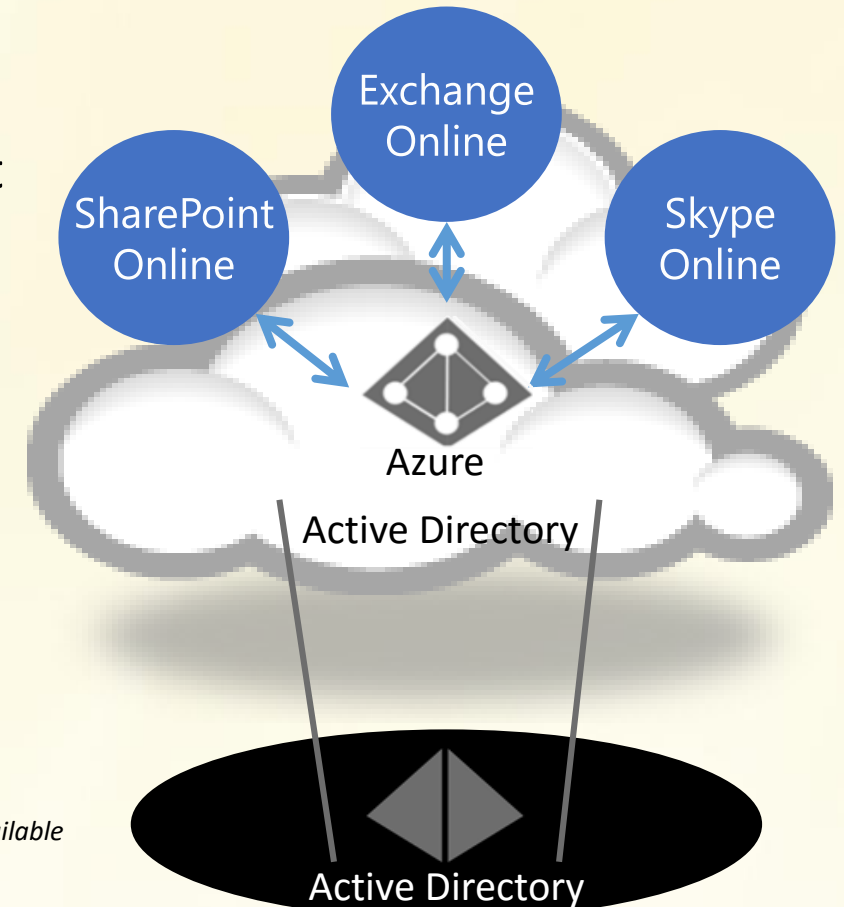
the one source for IT & AV

Where are your Office 365 Identities?

Microsoft Azure Active Directory

- Azure Active Directory (Azure AD) is Microsoft's multi-tenant cloud based directory and identity management service.
- Azure AD also includes a full suite* of identity management capabilities including:
 - Multi-factor authentication
 - Device registration
 - Self-service password management
 - Self-service group management
 - Privileged account management
 - Role based access control
 - Application usage monitoring
 - Rich auditing and security monitoring and alerting.

** Subscription level (Free, Basic or Premium) determines features available*



Azure AD Features

- Every paid subscription to Office 365 comes with a free subscription to Azure Active Directory.
- To activate this subscription and access the Azure management portal directly, you have to complete a one-time registration process.
- You can use Azure AD to manage your apps and to create and manage user and group accounts independent of Office 365.

| | | FREE | BASIC | PREMIUM |
|------------------------------------------------------------------------------------------------------------------------------|------------------------------------------------------------------------------------------|-----------------------------------------------------------------------------------|--------------------------------------------------------------------|-------------------------------------------------------------------------------------|
| Common Features | Directory Objects ¹ | 500,000 Object Limit | No Object Limit | No Object Limit |
| | User/Group Management (add/update/delete)/ User-based provisioning, Device registration | ✓ | ✓ | ✓ |
| | Single Sign-On (SSO) | 10 apps per user ² (pre-integrated SaaS and developer-integrated apps) | 10 apps per user ² (free tier + Application proxy apps) | No Limit (free, Basic tiers + Self-Service App Integration templates ³) |
| | Self-Service Password Change for cloud users | ✓ | ✓ | ✓ |
| | Connect (Sync engine that extends on-premises directories to Azure Active Directory) | ✓ | ✓ | ✓ |
| | Security/Usage Reports | 3 Basic Reports | 3 Basic Reports | Advanced Reports |
| Premium + Basic Features | Group-based access management/provisioning | | ✓ | ✓ |
| | Self-Service Password Reset for cloud users | | ✓ | ✓ |
| | Company Branding (Logon Pages/Access Panel customization) | | ✓ | ✓ |
| | Application Proxy | | ✓ | ✓ |
| | SLA | | ✓ | ✓ |
| Premium Features | Self-Service Group and app Management/Self-Service application additions/ Dynamic Groups | | | ✓ |
| | Self-Service Password Reset/Change/Unlock with on-premises writeback | | | ✓ |
| | Multi-Factor Authentication (Cloud and On-premises (MFA Server)) | -- ³ | -- ³ | ✓ |
| | Microsoft Identity Manager user CAL ⁴ | | | ✓ |
| | Cloud App Discovery | | | ✓ |
| | Connect Health | | | ✓ |
| | Automatic password rollover for group accounts | | | ✓ |
| | Azure Active Directory Join – Windows 10 only features | | | |
| Join a device to Azure AD, Desktop SSO, Microsoft Passport for Azure AD, Administrator Bitlocker recovery | | ✓ | ✓ | ✓ |
| MDM auto-enrolment, Self-Service Bitlocker recovery, Additional local administrators to Windows 10 devices via Azure AD Join | | | | ✓ |



Identity Management with Office 365

Cloud identity



Windows Azure Active Directory

Single identity in the cloud Suitable for small organizations with no integration to on-premises directories

A screenshot of the Office 365 Admin center. The top navigation bar shows 'Office 365' and 'Admin center preview'. The left sidebar contains navigation options: Home, Users, Active users, Contacts, Deleted users, Data migration, Groups, and Resources. The main content area is titled 'Home > Active users' and features a '+ Add a user' button, a 'More' dropdown, a 'Filters' dropdown set to 'All users', and a search box. Below this is a table of active users with columns for checkboxes, display names, and user names.

| <input type="checkbox"/> | Display name ^ | User name |
|--------------------------|-------------------|---------------------------------------|
| <input type="checkbox"/> | Alan Steiner | alans@CIECOM880791.onmicrosoft.com |
| <input type="checkbox"/> | Alicia Thomber | aliciat@CIECOM880791.onmicrosoft.com |
| <input type="checkbox"/> | Allie Bellew | allieb@CIECOM880791.onmicrosoft.com |
| <input type="checkbox"/> | Amy Alberts | amya@CIECOM880791.onmicrosoft.com |
| <input type="checkbox"/> | Anne Weiler | annew@CIECOM880791.onmicrosoft.com |
| <input type="checkbox"/> | Carlos Grilo | carlosg@CIECOM880791.onmicrosoft.com |
| <input type="checkbox"/> | Christa Geller | christag@CIECOM880791.onmicrosoft.com |
| <input type="checkbox"/> | CIE Administrator | admin@CIECOM880791.onmicrosoft.com |

Identity Management with Office 365

Cloud identity



Windows Azure Active Directory

Single identity in the cloud Suitable for small organizations with no integration to on-premises directories

Cloud identity with directory synchronization



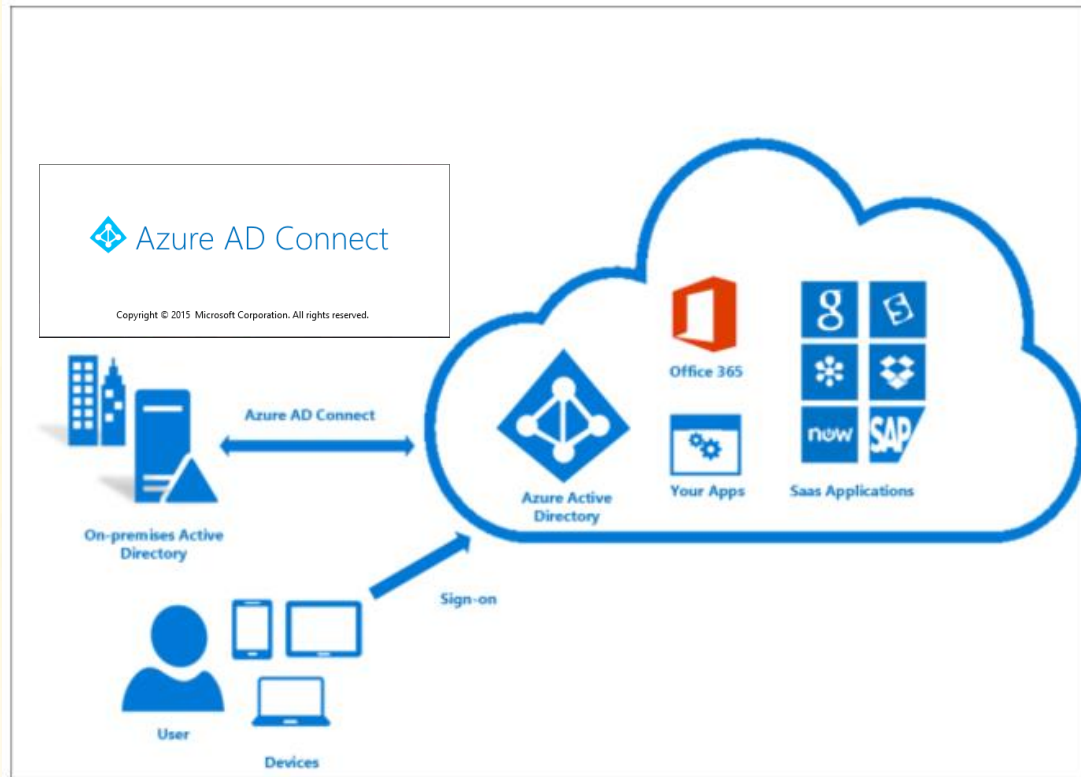
Windows Azure Active Directory

Directory Sync
(Azure AD Connect)

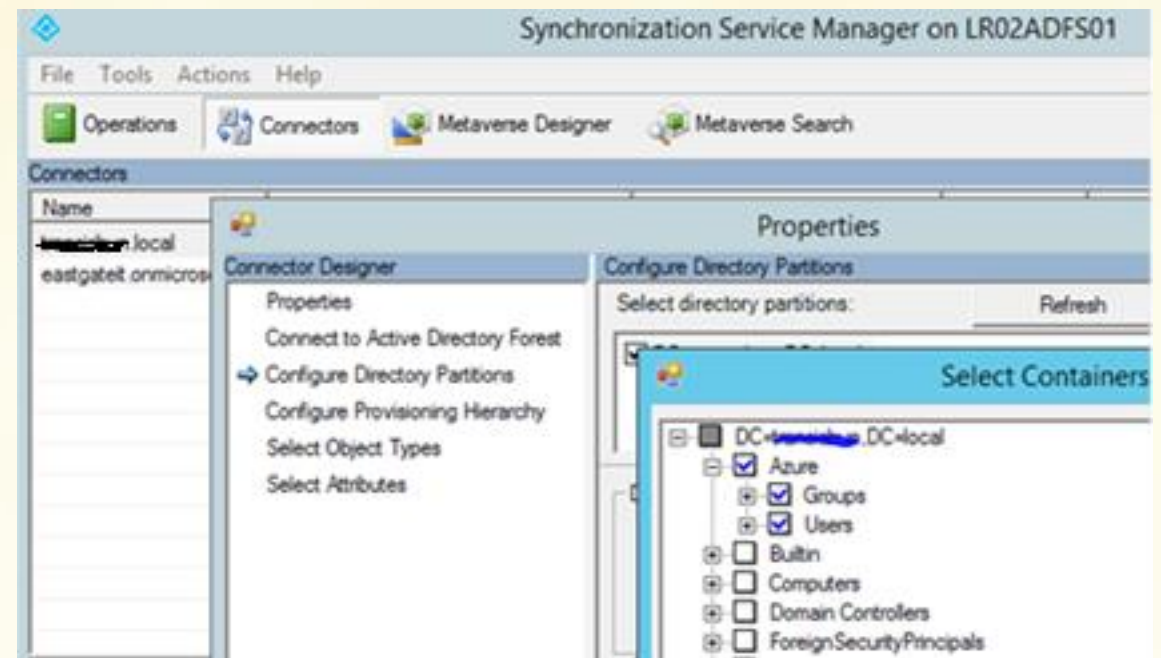
On-Premises Identity

Single identity suitable for medium and large organizations without federation*

Directory Synchronization



- Install on a Windows 2008 R2 / 2012 R2 server
- Configure OUs to synchronize
- Optional – Configure attribute filtering



Directory Synchronization Considerations

- Microsoft requires an Exchange server on-premises to manage Exchange attributes
- Password synchronization requires password changes to occur in Active Directory (unless a Premium Azure AD license is purchased)
- Account management is done on-premises for most settings

Identity Management with Office 365

Cloud identity



Windows Azure Active Directory

Single identity in the cloud Suitable for small organizations with no integration to on-premises directories

Cloud identity with directory synchronization



Windows Azure Active Directory

Directory Sync
(Azure AD Connect)

On-Premises Identity

Single identity suitable for medium and large organizations without federation*

Federated identity



Windows Azure Active Directory

Federation

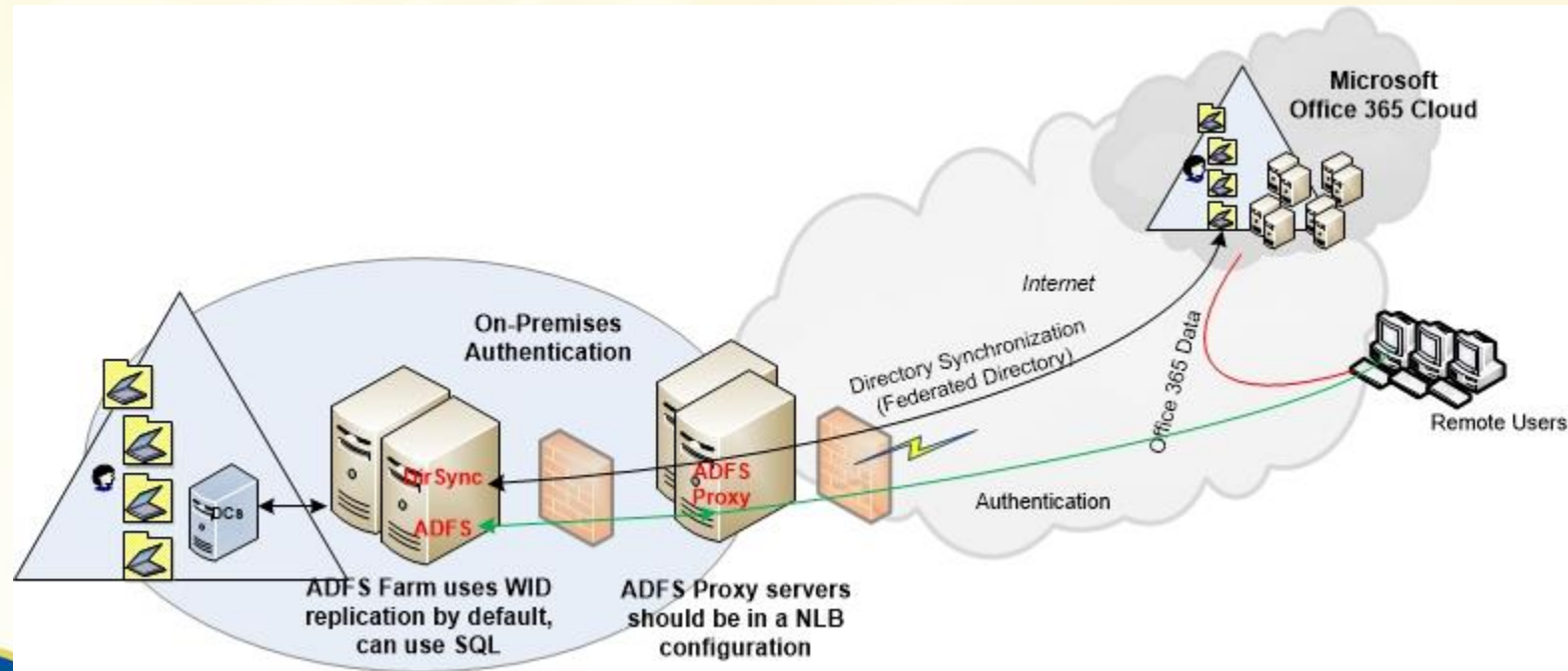
Directory Sync

On-Premises Identity

Single federated identity and credentials suitable for medium and large organizations

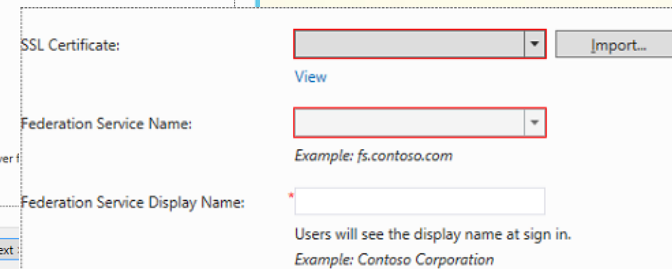
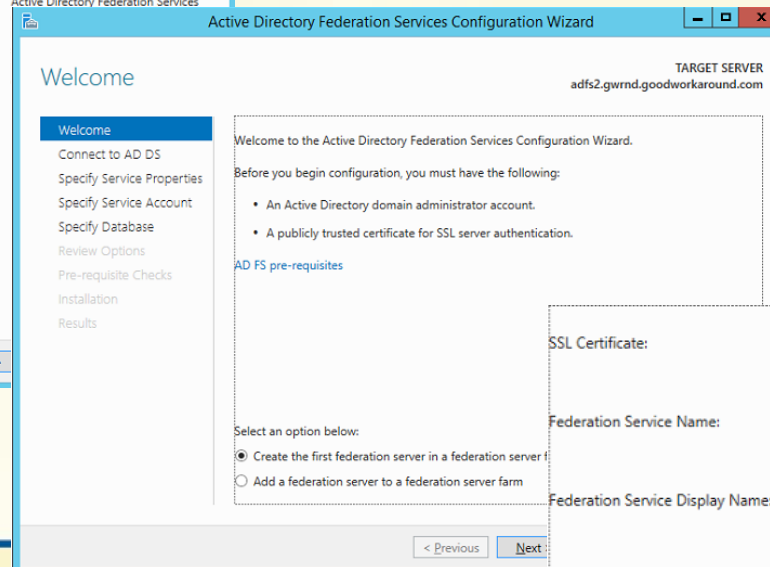
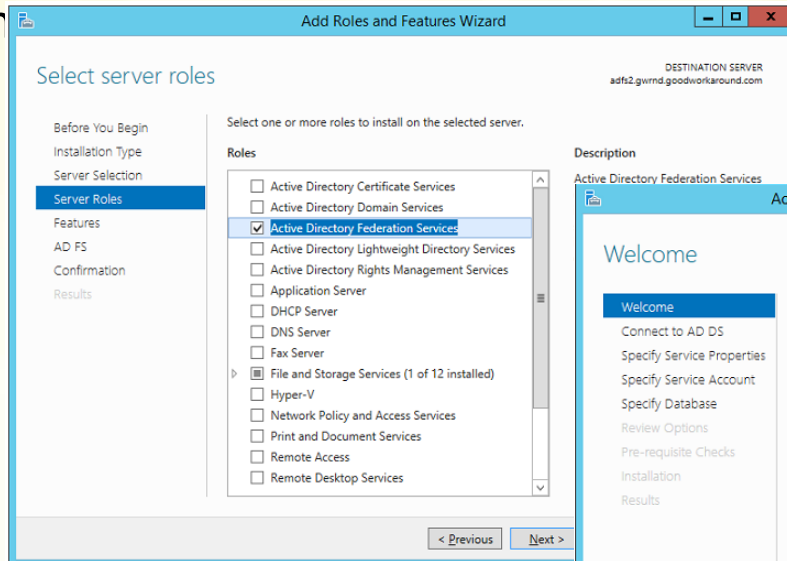
ADFS Implementation

- Multiple ADFS Servers and Proxy (Web Application Proxy)
- WID Replication and NLB for redundancy



ADFS Implementation

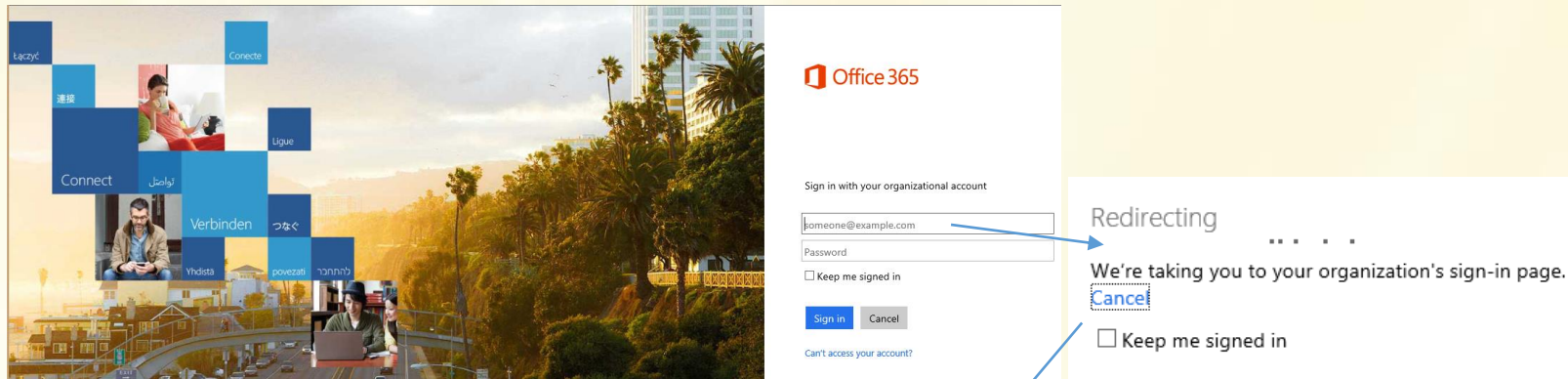
- Install the ADFS service (recommend creating a farm)
 - Requires an SSL certificate
 - Con



ADFS Implementation

- Users are redirected to the ADFS server for authentication

Portal.microsoftonline.com



Sign In

sso.Domain.com

Type your user name and password.

User name: Example: Domain\username

Password:

Federated Identity Considerations

- Microsoft requires an Exchange server on-premises to manage Exchange attributes
- All authentication and password resets occur on-premises. If the on-premises AD is not available the Office 365 resources will not be available.
 - Consider a fault tolerant design for your ADFS servers

Office 365 Admin Console

https://login.microsoftonline.com/Office 365 | Admin center preview

The screenshot displays the Office 365 Admin Console interface. On the left, a navigation sidebar includes: Home, Users, Groups, Resources, Billing, Support, Settings, Reports, Health, and Admin centers. The main content area features a search bar at the top. A prominent red banner states: "Oh no! Your Office 365 setup is incomplete. Get someone to help you." Below this are three progress indicators for "Select domain", "Add users", and "Setup DNS", with a "Go to setup" button. The interface is divided into several management tiles: "Users" (Add, Delete, Edit, Reset password), "Billing" (Total balance none, No purchases), "Office software" (Install, Share link, Settings, Troubleshoot), "Message center" (What's New: April 2016, Office 365 for Business Community is joining Micr..., Updated feature: Simple sharing links now visible i..., 18 unread messages), "Service health" (Exchange Online, View the service health), "Reports" (Active users), and "Support" (New service request, View service requests). A footer bar shows "Exchange", "Skype", and "Yammer" status indicators.



the one source for IT & AV

Demo – Office 365 Management / Monitoring



the one source for IT & AV

Email Migration Options



the one source for IT & AV

Mailbox Migration Options

| Migration option | Source messaging system | Comments | Can keep mailboxes on-premises? |
|---------------------------|---------------------------------------------------------------------------------------------------|-------------------------------------------------------------------------------------------------------|---------------------------------|
| Cutover migration | Exchange 2016, Exchange 2013 Exchange 2010, Exchange 2007 Exchange 2003 | Supports up to 2000 mailboxes; best for 150 or fewer. | No |
| Staged migration | Exchange 2007 Exchange 2003 | Requires directory synchronization. Recommended if more than 150 mailboxes. | Yes |
| Hybrid | Exchange 2016 Exchange 2013 Exchange 2010 | Requires directory synchronization. Provides seamless functionality across environments. | Yes |
| IMAP | Exchange 2000 Server or previous versions; non-Exchange messaging systems | Does not move calendar items or tasks. 500,000 item maximum. | Yes |
| Office 365 Import Service | Available if mail is saved in PST format. You can ship the files or upload them over the network. | If you have more than 10TB of data, shipping the drives is faster than uploading it over the network. | Yes |
| Third-party | For example: Lotus Notes, Novell Groupwise. | Consult your Microsoft partner for migration options. | No |

More information can be found here

[http://technet.microsoft.com/en-us/library/jj863291\(v=exchg.150\).aspx](http://technet.microsoft.com/en-us/library/jj863291(v=exchg.150).aspx)

Microsoft Migration Tools

Exchange admin center

dashboard

recipients

permissions

compliance management

organization

protection

advanced threats

mail flow

mobile

public folders

unified messaging

hybrid

mailboxes groups resources contacts shared migration

Click to view the status for all current migration batches. [Status f](#)



Migrate to Exchange Online

Migrate from Exchange Online

STATU

new migration batch

Select a migration type

The migration type to use depends on your existing email system, how many mailboxes you want to migrate, and whether you plan to maintain some mailboxes in your on-premises organization or migrate them all to the cloud. You'll also want to consider how long the migration will take and whether user identity will be managed in your on-premises organization or in Office 365.

[Learn more](#)

- Remote move migration (supported by Exchange Server 2010 and later versions)
- Staged migration (supported by Exchange Server 2003 and Exchange Server 2007 only)
- Cutover migration (supported by Exchange Server 2003 and later versions)
- IMAP migration (supported by Exchange and other email systems)

Select this if you're planning an Exchange hybrid deployment with mailboxes both on-premises and in Exchange Online. If you plan to migrate all mailboxes to Exchange Online over a long period of time, this migration type lets you use hybrid deployment features during migration. After the migration, user identity will still be managed in your on-premises organization. You have to use this type of migration to migrate more than 2,000 Exchange 2010 or Exchange 2013 mailboxes.

[Learn more](#)

Next

Cancel

system | source

35
years

the one source for IT & AV

Cutover

■ Features and Benefits

- **Simple and quick** migration solution
- **High-fidelity** solution – all mailbox content is migrated
- Typically best suited to **small and medium** organizations
- Users are **provisioned automatically** during migration
- Works with **Exchange 2003 and newer**
- Works with **on-premises or hosted** Exchange systems
- Identity management in the cloud (at least initially)
- On-premises migration tool is **not** required

■ Requirements and Limitations

- **Up to 2000 mailboxes** in source system (Recommended for <150 mailboxes)
- **Outlook Anywhere** service on source system (must have SSL cert issued by a public CA)
- Migration Account with **Full Access** or **Receive-As** permissions to all
- **Azure AD Connct** tool **disabled** in O365 tenant
- **SMTP domains** configured in O365 tenant

Cutover

- **Accounts Provisioning**

- Migration creates users, mailboxes, DLs and contacts
- Migration enables replies to migrated messages (i.e. provision process brings over the Legacy DNs)

- **Passwords**

- No access to **passwords from source directory** so **New passwords** created for all users
- A link to download passwords is sent to **admin**
- Users must **change password** on their first login

- **User Experience**

- Admin needs to **distribute new passwords** to users
- **Users create their new Outlook profile** using O365 username and new passwords (Autodiscover)
- All mail is downloaded from the Office 365 mailbox (i.e. the **OST** file must be recreated)

MigrationWiz by BitTitan

- A third party tool that can perform cutover migrations for mailboxes and Public Folders
- Allows Directory Synchronization to be configured
- Works with preexisting Office 365 accounts
- Enhanced data and folder filtering
- Bandwidth throttling
- Enhanced reporting
- Approximately \$12 per mailbox



<https://www.bittitan.com/products/migrationwiz>

Staged

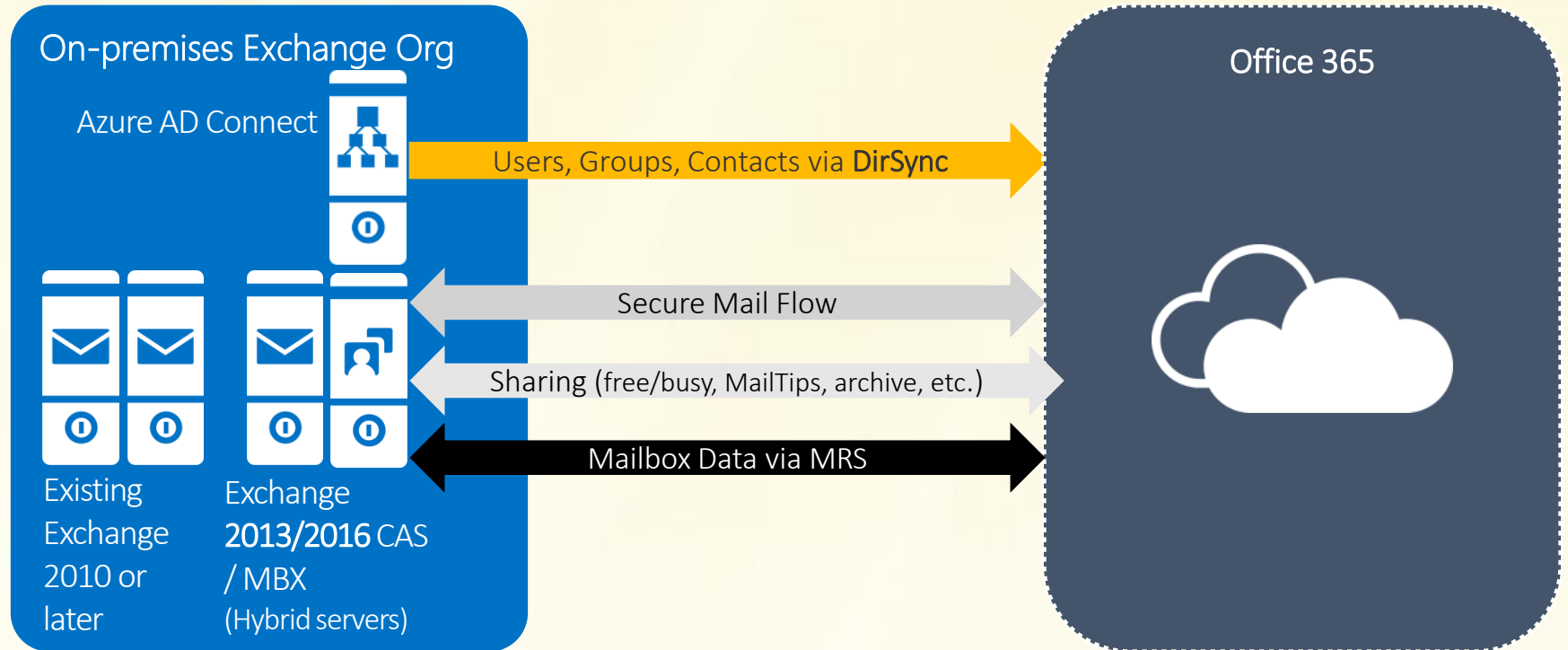
- Features and Benefits
 - **Simple and flexible** migration solution
 - **High-fidelity** solution – all mailbox content is migrated
 - Typically best suited to **medium and large** organizations
 - Users are provisioned with **Azure AD Connect** prior to migration
 - **No limit** on the **number of mailboxes**, users can be migrated in **batches**
 - Works with **Exchange 2003 and 2007 only, on-premises or hosted**
 - Identity management on-premises
- Requirements and Limitations
 - **Outlook Anywhere** service on source system (must have SSL cert issued by a public CA)
 - Migration Account with **Full Access** or **Receive-As** permissions to all mailboxes
 - **Azure AD Connect** tool **enabled** in O365 tenant
 - **SMTP domain(s)** configured in O365 tenant
 - An on-premises Exchange Server must remain post-migration for management

Staged

- **Accounts Provisioning**
 - For every on-premises mailbox to be migrated there needs to be a MEU or Mailbox in O365
 - Migration tool relies on Azure AD Connect to do provisioning
- **Passwords**
 - Target mailbox **passwords must be specified** for all the users
 - Administrators can force users to **change passwords** on first login
- **User Experience**
 - Admin needs to **distribute new passwords** to users
 - **Users create their new Outlook profile** using O365 username and new passwords (Autodiscover)
 - All mail is downloaded from the Office 365 mailbox (i.e. the **OST** file must be recreated)

Exchange 2013/2016 Hybrid – Architecture

- Hybrid servers to host connectors to O365
- Hybrid servers control mail flow to/from the two sites (OWA, SMTP, etc)
- Hybrid servers need to remain post-migration for management



Hybrid Coexistence Feature Comparison

| Feature | Simple | Hybrid |
|--------------------------------------------------------------------------------------------|--------|--------|
| Mail routing between on-premises and cloud (recipients on either side) | ● | ● |
| Mail routing with shared namespace (if desired) on both sides | ● | ● |
| Unified GAL | ● | ● |
| Free/Busy and calendar sharing cross-premises | | ● |
| Out of Office understands that cross-premises is "internal" to the organization | | ● |
| Mails, messaging tracking, and mailbox search work cross-premises | | ● |
| OWA redirection cross-premise (single OWA URL for both on-premises and cloud) | | ● |
| Single tool to manage cross-premises Exchange functions (including migrations) | | ● |
| Mailbox moves support both onboarding and offboarding | | ● |
| No outlook reconfiguration or OST resync required after mailbox migration | | ● |
| Preserve <u>auth</u> header (ensure internal email is not spam, resolve against GAL, etc.) | | ● |
| Centralized mail flow , ensures that all email routes inbound/outbound via <u>on-prem</u> | | ● |

Hybrid Mailbox Moves

- Mailbox migrations can go to/from Exchange online
- User's current Outlook profile is updated with the Exchange Online server name via Autodiscover.

- Offline files (OST files) do not have to be recreated.

User Experience

Depending on the Outlook version, users may be unaware of the migration. Outlook will update when the migration is completed. Best experience with Outlook 2013 or better.

The screenshot shows the Exchange Admin Center (EAC) interface. The top navigation bar includes 'Enterprise Office 365' and the user name 'Henrik Walther'. The main navigation menu on the left includes 'recipients', 'permissions', 'compliance management', 'organization', 'protection', 'mail flow', 'mobile', 'public folders', 'unified messaging', 'servers', and 'hybrid'. The 'recipients' menu is expanded, and a red arrow points to the 'mailboxes' sub-menu. The main content area displays a table of mailboxes with columns for 'DISPLAY NAME', 'MAILBOX TYPE', and 'EMAIL ADDRESS'. Three mailboxes are highlighted with a red box: David Simpson, Deanna Meyer, and Denise Smith. On the right side of the interface, there are several policy settings, and a red arrow points to the 'Move Mailbox' section, which includes the option 'To Exchange Online'.

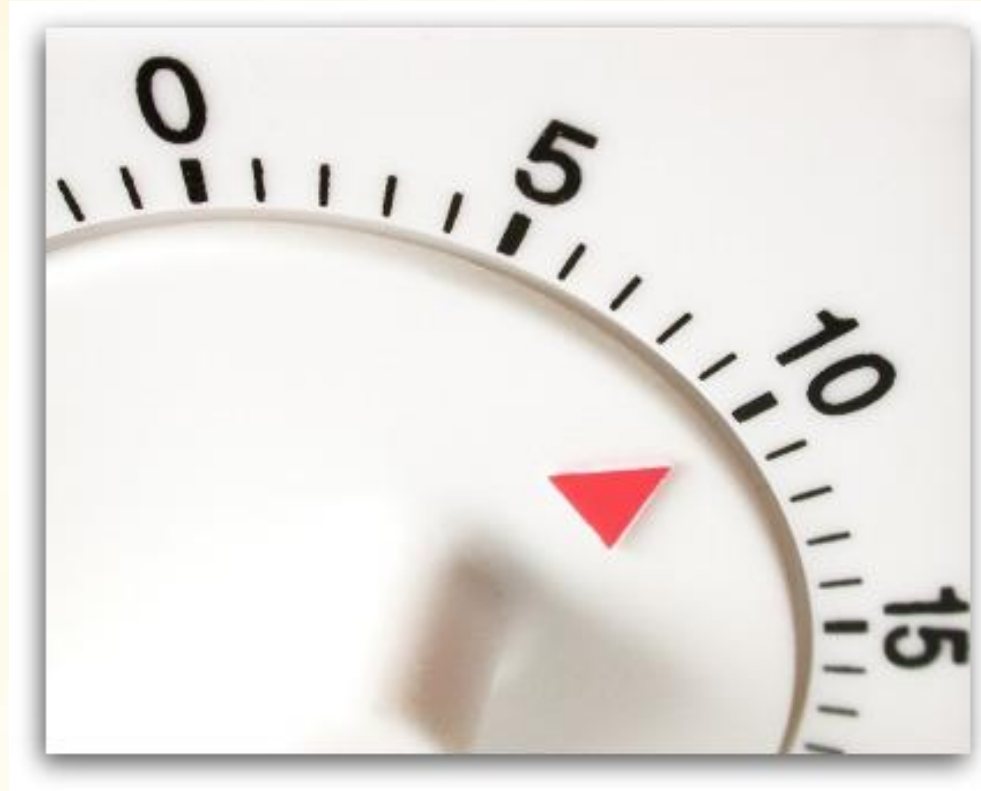
| DISPLAY NAME | MAILBOX TYPE | EMAIL ADDRESS |
|-----------------|--------------|-------------------------|
| David Bradley | User | DBradley@clouduser.dk |
| David Campbell | User | DCampbell@clouduser.dk |
| David Hamilton | User | DHamilton@clouduser.dk |
| David Hodgson | User | DHodgson@clouduser.dk |
| David Jaffe | User | DJaffe@clouduser.dk |
| David Johnson | User | DJohnson@clouduser.dk |
| David Orio | User | DOrio@clouduser.dk |
| David Simpson | User | DSimpson@clouduser.dk |
| Deanna Meyer | User | DMeyer@clouduser.dk |
| Denise Smith | User | DSmith@clouduser.dk |
| Derek Graham | User | DGraham@clouduser.dk |
| Denik Stenerson | User | DStenerson@clouduser.dk |
| Diane Tibbott | User | DTibbott@clouduser.dk |
| Don Funk | User | DFunk@clouduser.dk |
| Don Hall | User | DHall@clouduser.dk |
| Doris Hartwig | User | DHartwig@clouduser.dk |

Questions?



the one source for IT & AV

Lunch Orders & :10 Break



the one source for IT & AV

system | source

35
years

the one source for IT & AV



Dustin Sitton



the one source for IT & AV

Evaluations & Door Prizes Learning Center Offer Lunch

THANK YOU!

today's slides available @
www.syssrc.com/seminar_slides

